

Test Result

Medical Face Masks-Requirements and Test Methods

(EN 14683:2019+AC:2019)

Clause 5.2.2 Bacterial filtration efficiency (BFE)

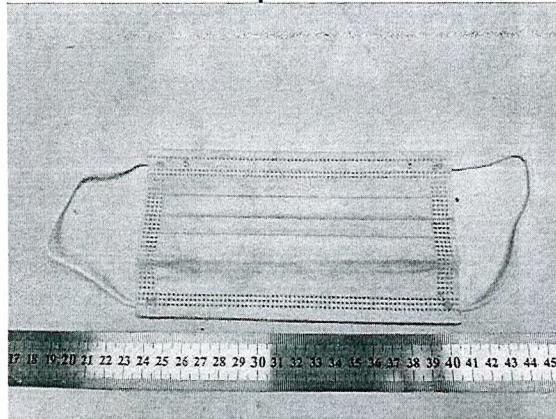
(EN 14683:2019+AC:2019 Annex B)

	1#	2#	3#	4#	5#
(BFE), %	98.1	98.6	98.6	98.0	98.2

Remark: Performance Requirement: Type I ≥95%, Type II ≥98%, Type IIR ≥98%

* This test standard is not within the accredited scope in SGS Shanghai testing centre, it is carried out by external laboratory accredited by CMA (China Metrology Accreditation).

Sample Photo



The statement of conformity in this test report is only based on measured values by the laboratory and does not take their uncertainties into consideration.

End of Report



Unless otherwise agreed in writing, this document is issued by the Company subject to its General Conditions of Service printed overleaf, available on request or accessible at <http://www.sgs.com/en/Terms-and-Conditions.aspx> and, for electronic format documents, subject to Terms and Conditions for Electronic Documents at <http://www.sgs.com/en/Terms-and-Conditions/Terms-e-Documents.aspx>. Attention is drawn to the limitation of liability, indemnification and jurisdiction issues defined therein. Any holder of this document is advised that information contained hereon reflects the Company's findings at the time of its intervention only and within the limits of Client's instructions, if any. The Company's sole responsibility is to its Client and this document does not exonerate parties to a transaction from exercising all their rights and obligations under the transaction documents. This document cannot be reproduced except in full, without prior written approval of the Company. Any unauthorized alteration, forgery or falsification of the content or appearance of this document is unlawful and offenders may be prosecuted to the fullest extent of the law. Unless otherwise stated the results shown in this test report refer only to the sample(s) tested and such sample(s) are retained for 30 days only. Attention: To check the authenticity of testing /inspection report & certificate, please contact us at telephone: (86-755) 8307 1443; or email: CN.Doccheck@sgs.com

3rd Building, No.889, Yishan Road, Xuhui District Shanghai, China 200233 t (86-21) 61402666 f (86-21) 64958763 www.sgs.com.cn
 中国·上海·徐汇区宜山路889号3号楼 邮编: 200233 t (86-21) 61402666 f (86-21) 64958763 e sgs.china@sgs.com